

No. 6825C

Heavy pneumatic toggle clamp

with horizontal cylinder attachment.
Tempering steel, burnished. The axle bolts running in bearing bushes are tempered, ground and locked with circlips.

Magnetic piston for end-position monitoring.

Clamp is ready for installation and consists of:
- toggle clamp element no. 6815C
- double acting FESTO pneumatic cylinder



Order no.	Size	F1 [kN]	F2 [kN]	F3 [kN]	F4 [kN]	F5 [kN]	Vn [dm ³]	Weight [g]
92205	4	6	9	1,5	2,2	0,75	1,0	4380
92213	6	12	18	2,5	3,5	1,00	1,8	7360
92221	8	20	30	4,0	6,0	1,80	4,3	16800

F3+F4 = maximum clamping force at 6 bar.

Vn = Air consumption per double stroke in dm³ at 6 bar.

Application:

These pneumatic toggle clamps are of machine tool quality and can be installed in machines such as material handling lines and special machines. Opening and clamping position of the clamp can be controlled electrically and can be intergrated into automated manufacturing.

Note:

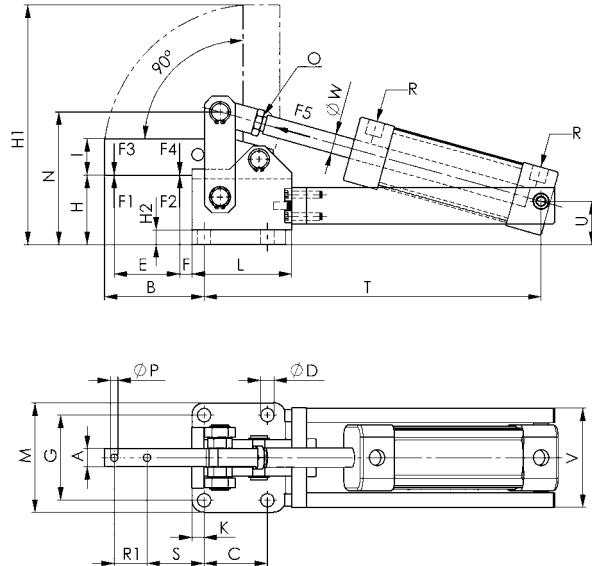
This heavy pneumatic toggle clamp is also available in a hydraulicdrive version (article no. 6960C). In case of interest, please ask for our catalogue „Hydraulic Clamping Systems“.

Suitable proximity switches for end-position monitoring are available using order no. 392241.

Design: PUR cable 0.3 m with M8 plug connection and rotating knurled nuts.

Switching function: NOC.

Output: PNP.



Recommendations



No. 6885,
page 104



No. 6825CE,
page 79



No. 6828M,
page 86

Dimensions:

Order no.	Size	A	B	C	dia. D	E	F	G	H	H1	H2	I	K	L
92205	4	15	82	52	11	54	10,0	70	57	197	12	30	10,0	82
92213	6	20	90	55	11	60	10,0	83	61	220	12	40	11,0	90
92221	8	30	128	80	13	95	9,5	111	86	310	12	60	12,5	120

Order no.	Size	M	N	O	dia. P	R	R1	S	T	U	V	dia. W	Piston dia.	Piston stroke
92205	4	90	109	M12x1,25	6,2	G1/4	27	47,0	277	35,5	82	16	40	80
92213	6	105	129	M16x1,50	8,2	G1/4	26	53,0	315	40,0	101	16	50	100
92221	8	135	176	M16x1,50	13,2	G1/4	40	69,5	383	54,0	123	20	63	120

Piston dia. = Cylinder dia. required for piston force F5 at 6 bar air pressure.

Subject to technical alterations.