

No. 6828M

Pneumatic toggle clamp

double-acting.

Max. operating pressure 6 bar.

Mini design in block version for clamping and grasping uses.

High-strength aluminium, red anodised. **Magnetic piston for end-position monitoring.** Clamping arm made of steel, burnished, with three holes.

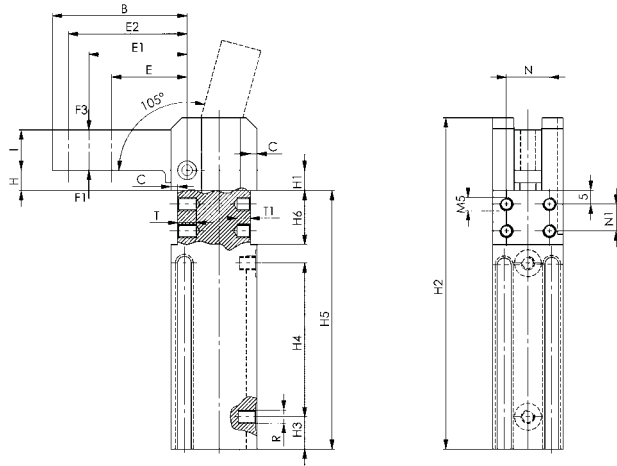


CAD

| Order no. | Size | Clamping moment at 5 bar | Holding moment max. | Weight |
|-----------|------|--------------------------|---------------------|--------|
| | | [Nm] | [Nm] | [g] |
| 91843 | 16 | 8 | 25 | 300 |
| 91868 | 20 | 15 | 54 | 550 |
| 91884 | 25 | 25 | 75 | 850 |

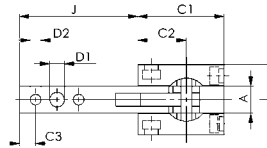
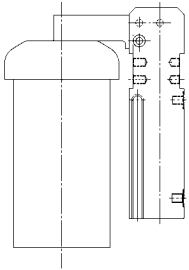
Note:

Especially small and compact, with maintenance-free bearing bushes. The clamp is self-locking. Please enquire separately for suitable proximity switches for end position monitoring.



Application example:

Mini clamp, e.g. as „cover close device“. Defined, locked close position through toggle lever mechanism.



Recommendations



No. 6829V,
page 85



No. 6828V,
page 90

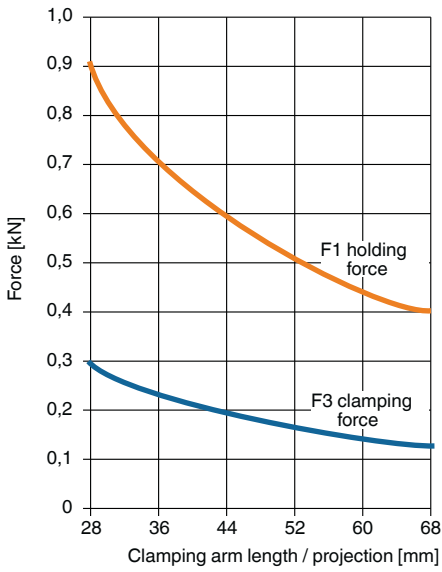
Dimensions:

| Order no. | Size | A | B | C | C1 | C2 | C3 | D1 | D2 H7 | E | E1 | E2 | H | H1 | H2 |
|-----------|------|----|----|-----|----|----|----|-----|-------|----|------|----|------|------|-----|
| 91843 | 16 | 10 | 50 | 2,5 | 32 | 18 | 6 | 5,5 | 4 | 28 | 36,0 | 44 | 7,5 | 7,5 | 123 |
| 91868 | 20 | 12 | 60 | 3,0 | 39 | 22 | 8 | 6,5 | 5 | 32 | 42,0 | 52 | 15,0 | 14,0 | 158 |
| 91884 | 25 | 16 | 75 | 4,0 | 45 | 25 | 10 | 8,5 | 6 | 40 | 52,5 | 65 | 19,0 | 17,0 | 182 |

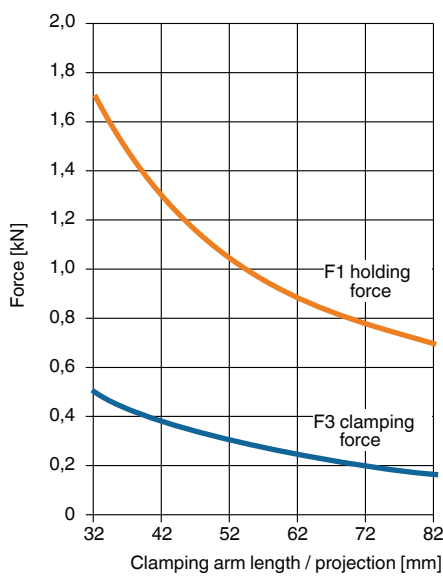
| Order no. | Size | H3 | H4 | H5 | H6 +0.1 | I | J | L | N ±0.1 | N1 ±0.1 | R | T | T1 | Piston dia. |
|-----------|------|------|----|-----|---------|----|----|----|--------|---------|------|---|----|-------------|
| 91843 | 16 | 12,0 | 57 | 96 | 20 | 15 | 44 | 26 | 16 | 10 | M5 | 7 | 5 | 16 |
| 91868 | 20 | 15,0 | 69 | 120 | 25 | 18 | 53 | 30 | 20 | 15 | G1/8 | 8 | 6 | 20 |
| 91884 | 25 | 17,5 | 80 | 136 | 28 | 22 | 68 | 35 | 25 | 18 | G1/8 | 8 | 6 | 25 |

Force diagrams

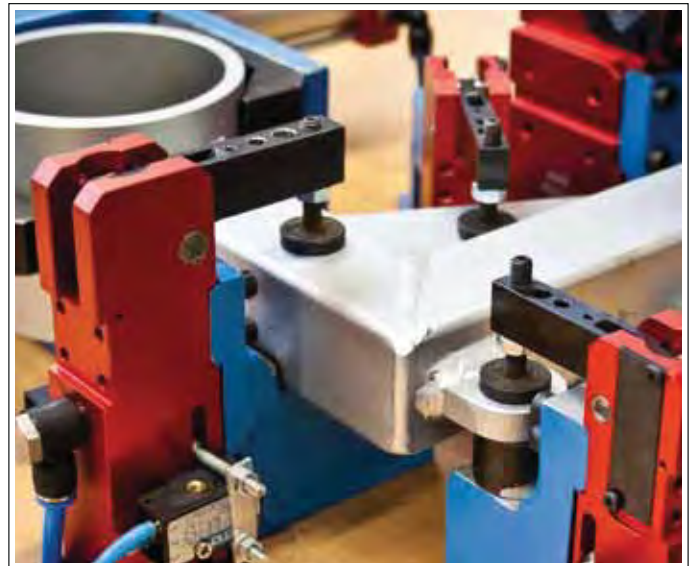
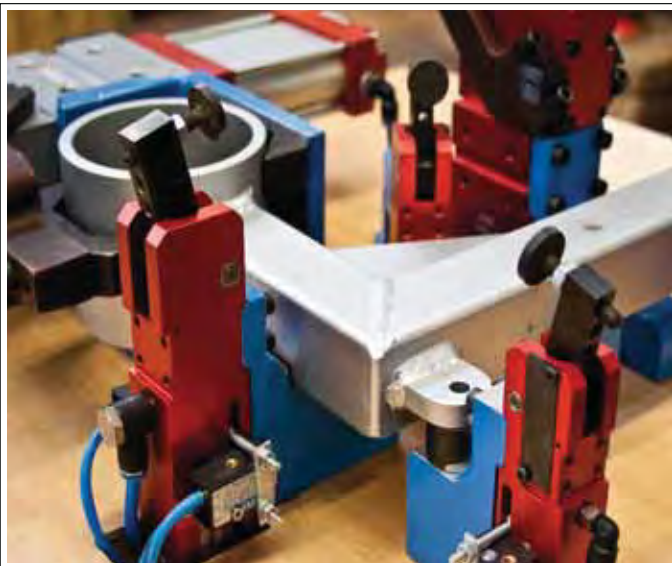
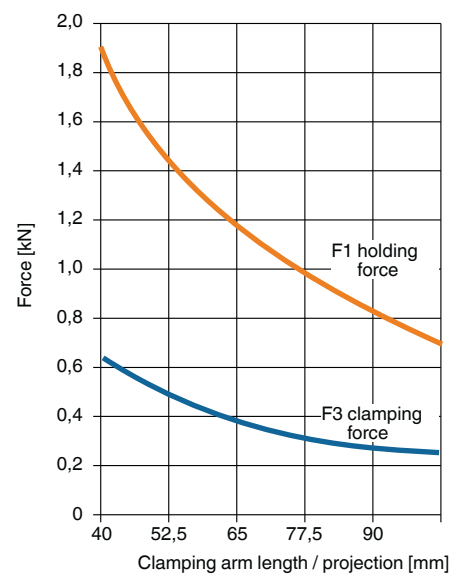
No. 6828M-16



No. 6828M-20



No. 6828M-25



Examples of mountings:

