

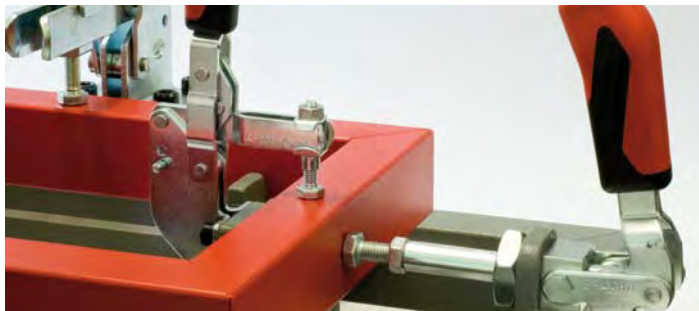
## POSITIONING AND CLAMPING AT THE SAME TIME AND IN ONE OPERATION

### The benefits at a glance:

- > Positioning and clamping in one operation
- > Robust and stable design
- > Workpiece easy to remove thanks to the fully retracted clamping arm
- > Optimised quality consistent with the AMF quality standard

Precise positioning and reliable clamping of individual components are of paramount importance when welding fixtures. In practice, this is guaranteed through the simultaneous use of rods and vertical toggle clamps, or by one's own complex design. The AMF Combiclamp accomplishes these two tasks in one operation, eliminating the need to use different toggle clamps. The sliding block guide on the Combiclamp converts the motion of the lever arm into a horizontal and vertical clamping movement, through which the workpiece is positioned and clamped at the same time. See for yourself the saving potential of using the new AMF Combiclamp!

### PRESENT FIXTURE:



### SET-UP WITH AMF-COMBICLAMP:



### No. 6860

#### Combination clamp with red handle

Galvanized and passivated.  
Rivets made of stainless steel which run in hardened bushings.  
Bearings are pre-lubricated.  
Ergonomic, oil-resistant handle with large grip surface and soft components.



| Order no. | Size | F1<br>[kN] | F2<br>[kN] | Weight<br>[g] |
|-----------|------|------------|------------|---------------|
| 93831     | 1    | 1,0        | 1,0        | 340           |
| 93880     | 2    | 2,0        | 2,0        | 700           |
| 93864     | 3    | 3,0        | 3,0        | 1620          |

### No. 6860Y

#### Combination clamp with yellow handle

**NEW!**



| Order no. | Size | F1<br>[kN] | F2<br>[kN] | Weight<br>[g] |
|-----------|------|------------|------------|---------------|
| 557143    | 1    | 1,0        | 1,0        | 340           |
| 557144    | 2    | 2,0        | 2,0        | 700           |
| 557145    | 3    | 3,0        | 3,0        | 1620          |

### No. 6860J

#### Combination clamp with orange handle

**NEW!**



| Order no. | Size | F1<br>[kN] | F2<br>[kN] | Weight<br>[g] |
|-----------|------|------------|------------|---------------|
| 557360    | 1    | 1,0        | 1,0        | 340           |
| 557361    | 2    | 2,0        | 2,0        | 700           |
| 557362    | 3    | 3,0        | 3,0        | 1620          |

Subject to technical alterations.

## No. 6860E

Combination clamp with blue handle

**NEW!**



| Order no. | Size | F1<br>[kN] | F2<br>[kN] | Weight<br>[g] |
|-----------|------|------------|------------|---------------|
| 557689    | 1    | 1,0        | 1,0        | 340           |
| 557690    | 2    | 2,0        | 2,0        | 700           |
| 557691    | 3    | 3,0        | 3,0        | 1620          |

## No. 6860G

Combination clamp with green handle

**NEW!**



| Order no. | Size | F1<br>[kN] | F2<br>[kN] | Weight<br>[g] |
|-----------|------|------------|------------|---------------|
| 557528    | 1    | 1,0        | 1,0        | 340           |
| 557529    | 2    | 2,0        | 2,0        | 700           |
| 557530    | 3    | 3,0        | 3,0        | 1620          |

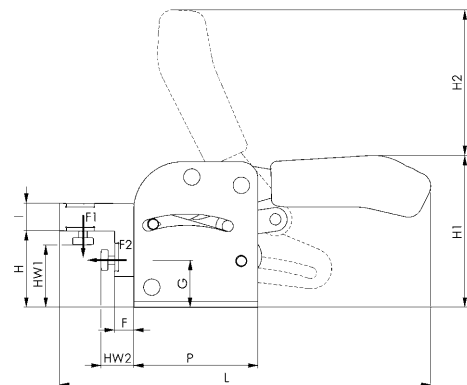
## No. 6860T

Combination clamp with black handle

**NEW!**



| Order no. | Size | F1<br>[kN] | F2<br>[kN] | Weight<br>[g] |
|-----------|------|------------|------------|---------------|
| 558028    | 1    | 1,0        | 1,0        | 340           |
| 558029    | 2    | 2,0        | 2,0        | 700           |
| 558030    | 3    | 3,0        | 3,0        | 1620          |



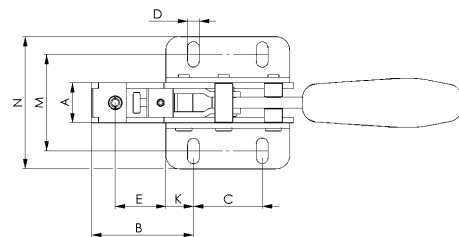
### Recommendations



No. 6841,  
page 40

No. 6830,  
page 26

No. 6860P,  
page 118



### Dimensions:

| Size | A    | B  | C  | D   | E  | F    | G  | H    | H1  | H2  | HW1 min. | HW1 max. | HW2 min. | HW2 max. | I  | K    | L   | M         | N  | P  |
|------|------|----|----|-----|----|------|----|------|-----|-----|----------|----------|----------|----------|----|------|-----|-----------|----|----|
| 1    | 17,0 | 33 | 40 | 5,5 | 15 | 0,5  | 22 | 36,0 | 74  | 62  | 25       | 32       | 5        | 10       | 12 | 7,5  | 150 | 34,5-39,5 | 53 | 55 |
| 2    | 19,5 | 56 | 50 | 6,5 | 32 | 9,0  | 28 | 46,0 | 94  | 87  | 30       | 40       | 14       | 24       | 16 | 12,5 | 219 | 48,5-61,5 | 75 | 75 |
| 3    | 29,0 | 74 | 50 | 8,5 | 37 | 14,0 | 34 | 55,5 | 110 | 106 | 40       | 50       | 20       | 30       | 20 | 20,0 | 270 | 60,0-80,0 | 96 | 90 |